





PENTHOUSE SUITE 1-10P

1010 Vienna, Kärntnerstrasse 28

PENTHOUSE SUITE 1-10P

This apartment is located direct in the center of Vienna, next to the famous Operahouse and St. Stephan Cathedral direct on Kräntnerstreet! available for 1-10 Guests
2xTerrace, 4 Bedrooms, 3 Bathrooms, 2 extra WC, Livingroom, Kitchen, Free WIFI-Internet, AirCondition. Our PenthouseSuite offers a generous living room with view. With 1780sqft of living space, this apartment is ideal for a stay with friends or the whole family! All Sights and Shopping areas are in front of the door!

from **EUR 530** per night

-  fully equipped kitchen
-  Linen
-  Towels
-  Internet/WiFi
-  Cable/Satellite TV
-  Air conditioning

€ PRICES

| Persons | 1 - 8 Guests | Extrabed 9G | Extrabed 10G |
|---------------------|-----------------------|-------------------|-------------------|
| Standardrate 2016 | 530 EUR per night | 530 EUR per night | 530 EUR per night |
| early booker | bookable min. 95 days | prior to arrival | -8% |
| last minute | bookable max. 40 days | prior to arrival | -15% |
| - | - | - | - |
| 15.Dec - 08.Jan2017 | 570 EUR per night | 570 EUR per night | 570 EUR per night |
| Specialprice | shows up | in | booking engine |
| Longtermrental | Price on request | - | - |
| special offers | available | on request | all year long |

The price is an Apartmentprice/night - NOT per Person! Checkout: - 11:00am, Checkin: 14:00pm - The price includes VAT, electricity, Gas, heating, water, A/C if available, linen, and towels. Minim stay depends on season, 3 – 5 nights. The amount for final cleaning you have to pay once! EUR 90,-- Visitorstax extra! A down payment of 30% has to be paid via credit card as soon as a booking is active! The rest must be paid via Credit card or cash at handover of key. Cancellation policy: Free! If cancelled up to 30 days before date of arrival, no fee will be charged. If cancelled up to 7 days before date of

arrival, 30 percent of all nights will be charged. If cancelled later or in case of no-show, the total price of the reservation will be charged.

i AMENITIES

| | | | |
|--------------------------|--------------------------|--------------------------|----------------------------|
| AM/FM Radio | ATM Card (Maestro) | Air conditioning | Apartment with cleanin... |
| Baby and toddler equi... | Balcony/terrace | Bathtub | Bathtub/shower comb... |
| Cash | Child's bed | City center | Coffee machine |
| Crib | Dishwasher | Double bed (Kingsize) | Egg cooker |
| Elevator | English | Four-burner stove | German |
| Hair dryer | High-speed internet a... | Historic | Hotel with cleaning equ... |
| Kettle | Kitchen | Kitchen equipment | Linen provided |
| Mastercard/Eurocard | Microwave | Microwave with baking... | Non smoking property |
| Non smoking rooms | Oven | Refridgerator | Rollaway bed |
| Safe | Shower | Single bed | Sofa |
| Street side parking | TV | Tableware available | Toaster |
| Towels | Visa | Washing machine | Wireless Internet |

Bedroom facilites

| | Einzel Betten | Doppel Betten | Extra Betten |
|----------------|------------------|------------------|-----------------|
| Schlafzimmer 1 | - | 1 | - |
| Schlafzimmer 2 | - | 1 | - |
| Schlafzimmer 3 | 2 | - | 1 |
| Schlafzimmer 4 | 2 | - | 1 |

Bathroom facilities

| | WC | Shower | Tub |
|--------------|----|--------|-----|
| Badezimmer 1 | - | 1 | - |
| Badezimmer 2 | - | 1 | - |
| Badezimmer 3 | - | - | 1 |
| Extra WC | 1 | - | - |
| Extra WC | 1 | - | - |

➤ APPROACH

By plane from Vienna International Airport

Taxi:

Book our taxi service, available at ordering stage.

Address: Kärntnerstreet 28

Duration: depending on traffic approx. 20 – 30 minutes

City Airport Train:

City Airport Train to "Wien Mitte" station.

From there take Underground-Line U4 towards "Hütteldorf".

Get off at "Karlsplatz" station and use exit "Oper".

Duration: 25 – 35 minutes

By train

Wien Westbahnhof:

Take Underground Line U3 towards "Simmering".

Change line at "Stephansplatz" station to line U1 towards "Reumannplatz".

Get off at "Karlsplatz" station – exit "Oper".

Duration: 10-20 minutes

Wien Südbahnhof/Meidling:

Take Underground Line U6 towards "Floridsdorf".

Change line at "Längenfeldgasse" station to line U4 towards "Heiligenstadt".

Get off at "Karlsplatz" station – exit "Oper".

Duration: 15 minutes

Underground Network:

Download or print a current map of the Vienna underground network [here](#)

By car

For a detailed description use the route planner which is available on the apartment page free of charge.



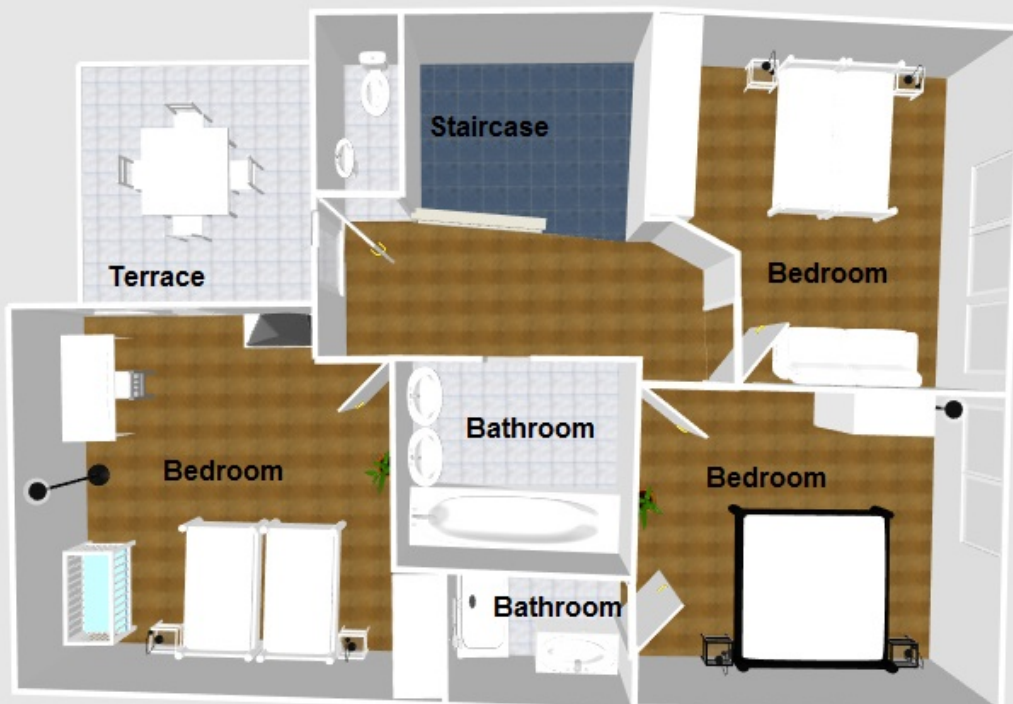
PICTURES





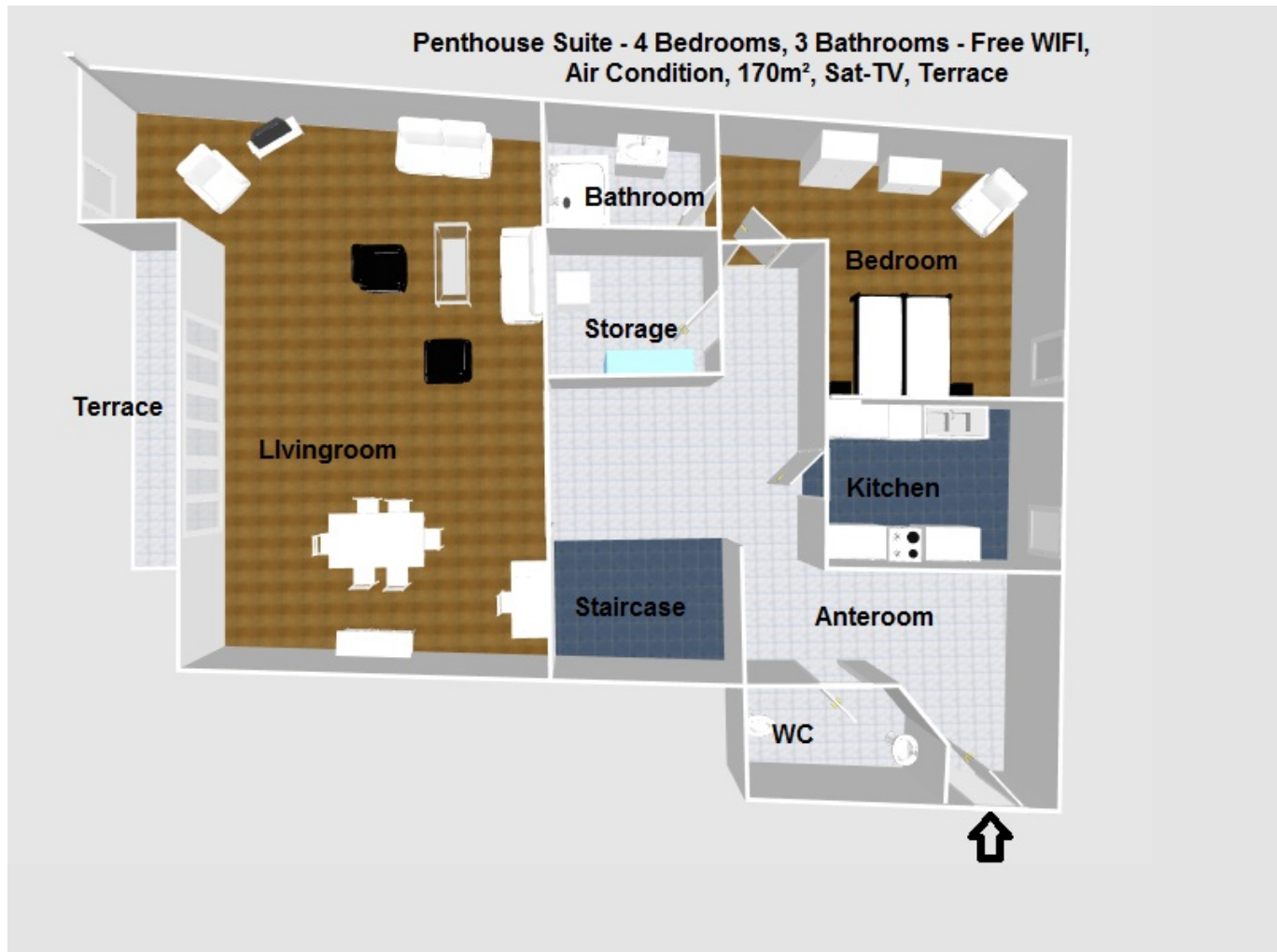
FLOOR PLAN

Penthouse Suite - Free WIFI, A/C, Satellite TV, first floor





FLOOR PLAN



MAP

